

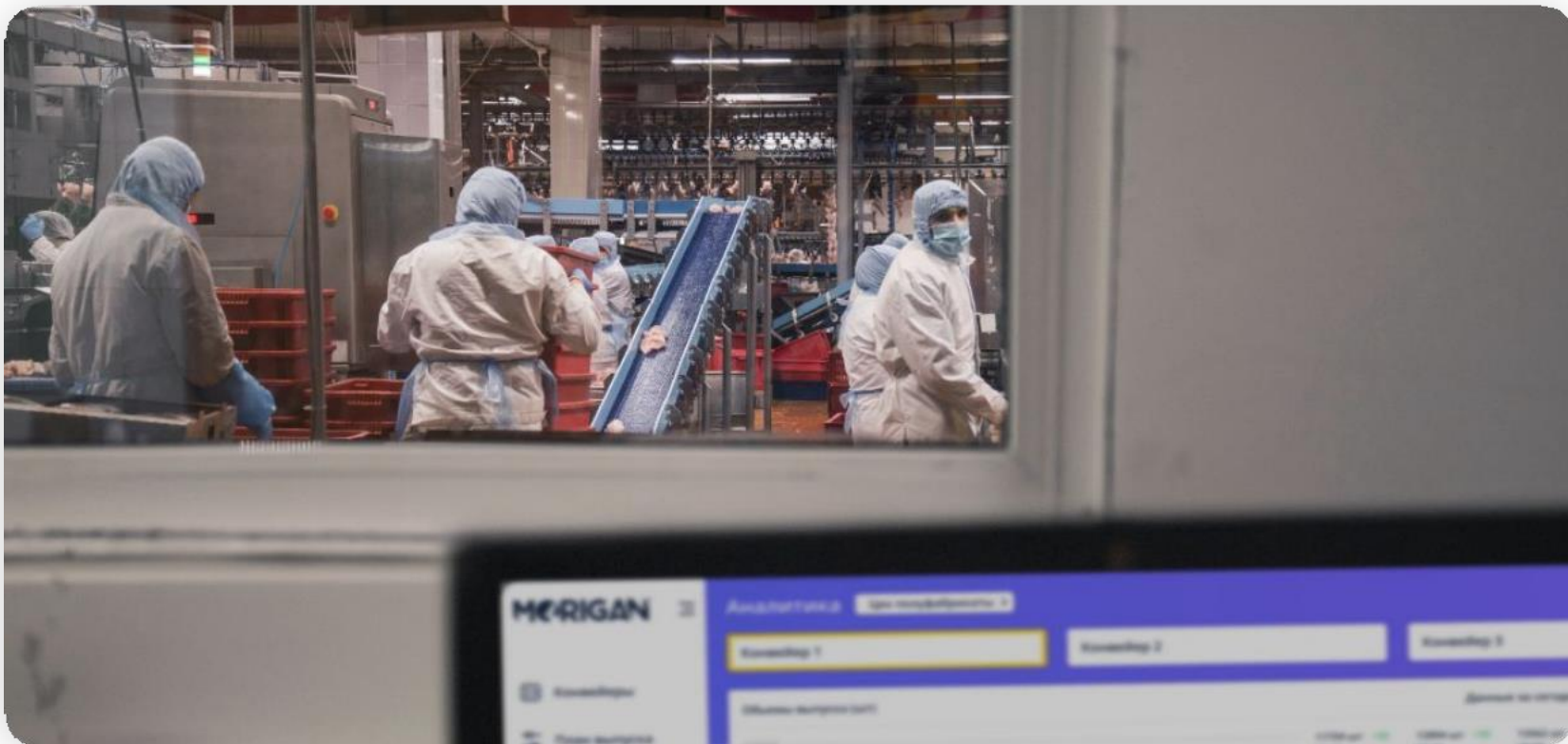


# Shop Resource Management System

MORIGAN POWERED BY MATLLER



**MORIGAN**<sup>®</sup> POWERED BY  
**Matller**



**What gets measured gets managed**  
**Peter Drucker**



# The main "pain" of production is low labor efficiency

- ✗ Lack of motivation among workers for results
- ✗ Lack of operational information about individual employee productivity indicators
- ✗ Unscheduled equipment downtime
- ✗ Manufacturing process technology not respected by employees





# System Description

A video analytics system in the production hall that allows you to obtain analytical information combined from different parts of the shop. The system works online and allows you to quickly make management decisions.





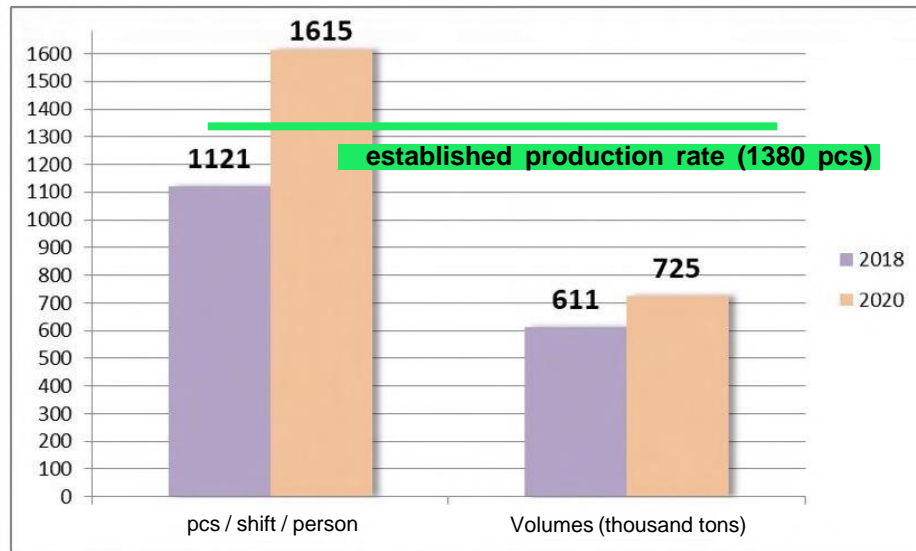
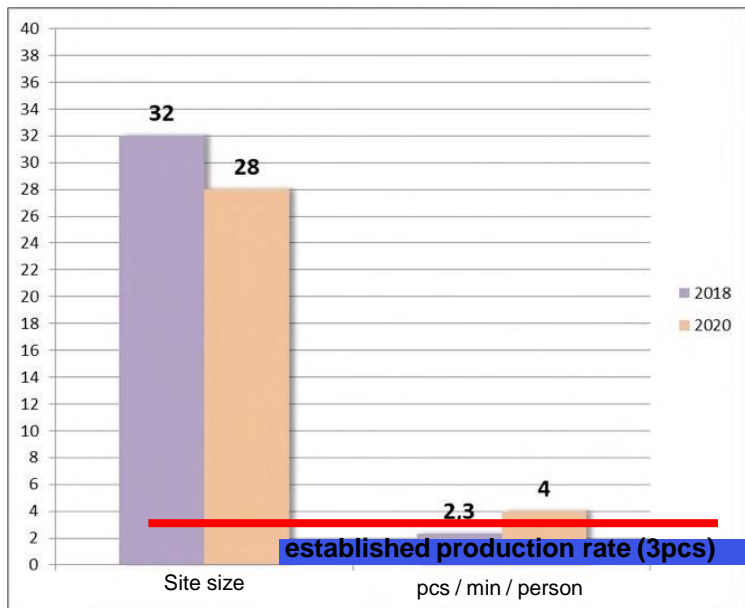
# Visual dynamics in the Cherkizovo Group of Companies for 1 month



**Our experience of implementing the Morigan.Lean system at similar broiler poultry farms has shown that payroll based on individual employee performance significantly increases labor efficiency.**



# Results after 3 years of operation



- Reduced the number of workers on the site
- Increased the production rate almost 2 times

- Increased the production rate for shift by 31%.
- Increased volumes

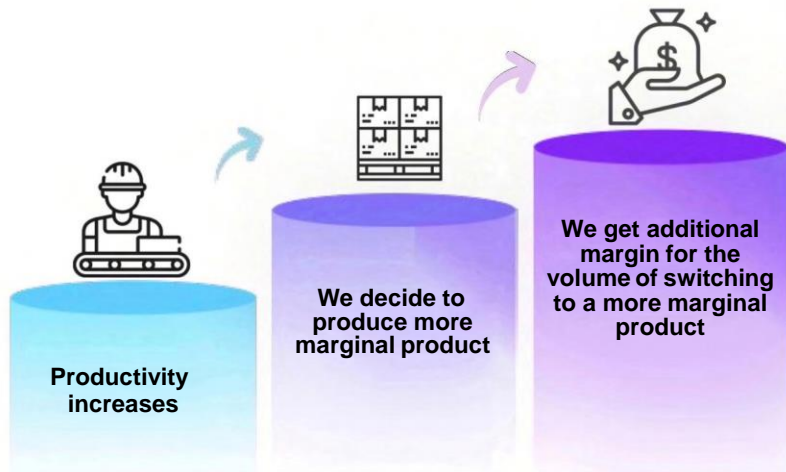


# Implementation effects

## Growth of positive factors

Increase in the company's marginal profit

**FROM 15%**



## Reduction of negative factors

**From 30%** Reduced equipment downtime



The adaptation period for new employees is reduced from 1 month to 5 day



Savings on payroll  
(employee optimization)



# The system allows:



Keep track of equipment downtime



Monitor compliance with sanitary standards



Monitor the execution of orders



Monitoring compliance with the regulations of the production process



Get statistics of individual performance and its dynamics



Automate the process of reading barcodes and QR codes when transferring from production to a warehouse of finished products







# ABOUT THE SYSTEM

## EFFECTS

- INCREASE IN LABOR PRODUCTIVITY
- REDUCTION OF PRODUCTION TIME



# System interface

The screenshot displays the MORIGAN system interface for a production line. The top navigation bar is purple and includes the MORIGAN logo, a menu icon, and the text "Conveyors" and "Shift 1, 8:00-17:00". Below the navigation bar, there are three summary boxes for conveyor belts: "Conveyor 1 23584 pcs.", "Conveyor 2 65411 pcs.", and "Conveyor 3 19684 pcs.". The main content area is divided into two sections. The left section, titled "6) Conveyors", shows a vertical conveyor belt layout for "Chicken thigh" with 10 stations. Each station is represented by a card with a product name, quantity, and a status icon. The right section, titled "Sections 6-7", features a live video feed of workers in a production area. Below the video feed is a "Product productivity schedule (pcs / h)" chart, which is a line graph showing performance over time. The chart includes a legend for "Performance" (orange line) and "Standard" (blue line). A data point for "18, wed" is highlighted with a value of 126.

**MORIGAN** ☰ **Conveyors** Shift 1, 8:00-17:00

**Semi-finished products shop** Conveyor 1 23584 pcs. Conveyor 2 65411 pcs. Conveyor 3 19684 pcs.

**6) Conveyors**

- Release Plan
- Analytics >
- Staff
- Reports
- Helpers»
- Settings

**Conveyor belt** Chicken thigh

Station	Product	Quantity	Status
1	Kronshatsky K. K. 900	651 pcs	OK
2	Meat on the bone	651 pcs	OK
3	Not defined	651 pcs	Warning
4	Kronshatsky k k	651 pcs	OK
5	Kronshatsky KK 900	651 pcs	OK

**Sections 6-7**

**Product productivity schedule (pcs / h)** Without skin v

126

— Performance — Standard



### **What are we doing**

We create programs based on artificial intelligence

### **What we know better than others**

Computer vision

Neural networks

Automatic control of work processes in production

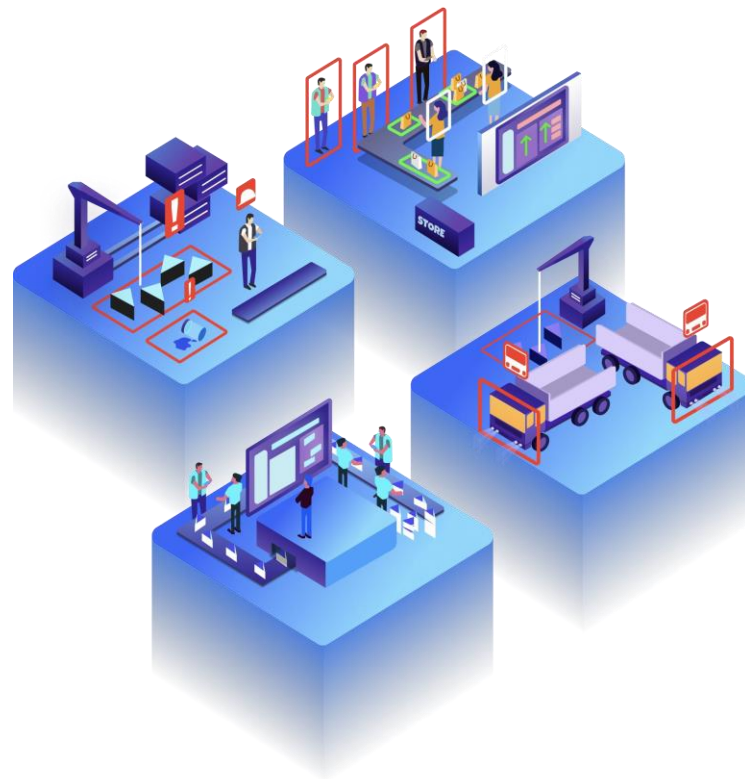
### **How much experience do we have**

On the market since 2008



# Result in 5 steps

- 01** Contact manager
- 02** Conduct a survey
- 03** Agree terms
- 04** Implement conditions
- 05** Get the result



# Contact us

→ Website: [www.matller.com](http://www.matller.com)

→ TEL.: 8-800-700-16-68

→ [EMail: info@matller.com](mailto:info@matller.com)

